

IBUSUKI MINAMIKYUSHU MAKURAZAKI MINAMISATSUMA

●● Two-day, one-night tour course ●●

Travel to the southern coast of the Satsuma Peninsula. Peaceful rural landscapes, expansive tea fields, seaside views, and the majestic Mt. Kaimon-dake rising into the sky. Enjoy the beauty of ever-changing scenes and the history and culture of the region. A trove of great food and hot springs.

DAY 1

START! Kagoshima-Chuo Sta. 393 575 576*77

1 Chiringashima Island
The tide can sometimes cause a sand path to appear on the waves – you can walk over it to the island. The sandbar appears from March to October.
Nishikata, Ibusuki-shi, Kagoshima-ken 0993-22-2111 (Ibusuki City Tourism Division) 285 381 733 *84

2 Sandbar calendar
Katsubushi Ramen

3 A superb view!
Kissho Bell
Send to be good luck charm in Japan

4 Bandokorobana Nature Park Seashore House
From the tip of the cape you can look out over the great wide sea and Mt. Kaimon-dake. Umi-no-ike features a ring-like reef that you can walk around during low tide. Don't miss Japan's only seashore farm for sightseeing!
26 Tategamihonmachi, Makurazaki-shi 0120-467-355 198 064 163 *75

5 Ono-dake Park
You can drive almost to the top of a single-peak mountain (466m). From there, just climb 108 steps to the top. Offers a panoramic view of Mt. Kaimon-dake, Lake Ikeda-ko, the tea fields, and the sea.
Kori, Ei-cho, Minamikyushu-shi 0993-83-2511 (Minamikyushu City Commerce, Industry, and Tourism Division) 285 302 278*17

6 Taketora
A popular ramen noodle shop that you can line up for. Be sure to try the Katsubushi Ramen, made with the finest quality dried bonito that busuku-Yamagawa has to offer.
1-1-13 Omure, Ibusuki-shi 0993-22-5358 285 257 249*47

7 Makurazaki Nagisa Onsen
Enjoy the wide open outdoors from an outdoor bath with a great view of the sea. Marvel at the evening sun which sets on the other side of Tategami-hwa Rock, and the lights from the streets of Makurazaki and the fishing fires on the ocean at night.
17 Iwado-cho, Makurazaki-shi 0993-72-5080 198 008 695*23

8 Makurazaki Kanko Hotel Iwato
Located by the sea, providing great views from the rooms. Offers delicious food such as bonito unloaded from Makurazaki Port, wagyu beef and Berkshire pork from the Makurazaki region. There are also hot springs from which you can see the sea.
58 Iwado-cho, Makurazaki-shi 0993-72-2343 198 037 521*72

9 Satsuma Shuzo Kedogawa Distillery Meijura
A shochu storehouse, historically familiar for the Satsuma Shiranami brand. You'll find over 100-year-old earthenware pots still in use today. You can tour the distillery to see the traditional methods for making shochu, and have a chance to taste the shochu made here.
26 Tategamihonmachi, Makurazaki-shi 0120-467-355 198 064 163 *75

10 Minamisatsuma Koryu Center Niinamaru
Located in a tangerine-producing region, with a variety of citrus fruits available in the Butsuruyukan hall. The lunch buffet uses regional ingredients and is quite popular. Their kumquat curry is also famous.
1304-1 Kasada-tsuzuki, Minamisatsuma-shi 0993-55-2700 198 333 258*80

11 JR Makurazaki Sta.
(The southernmost JR station on the mainland)
The south's terminal station. This charming wooden station was rebuilt in 2013. There is also a map in the station square done in 3D style.
23-5 Higashihonmachi, Makurazaki-shi 0993-72-1111 (Makurazaki City Fisheries, Commerce, and Industry Division) 198 066 186*03

12 Hinokami Park
Japanese myths and legends are still alive on this cape. Tategami-hwa Rock offshore stands 42m. It's revered as the protector god of the sea. On a clear day you can see Mt. Kaimon-dake and the islands of Iojima and Yakushima.
1 Hinokamisaki-cho, Makurazaki-shi 0993-72-1111 (Makurazaki City Fisheries, Commerce, and Industry Division) 761 288 771*02

13 Chiran Samurai Houses and Gardens
The traditional views of stone walls and hedges are impressive. You'll still find the orderly streets of the 18th century. You can tour some of the houses and seven of the gardens to get a feel for the old samurai way of life.
13731-1 Kori, Chiran-cho, Minamikyushu-shi 0993-58-7878 198 473 179*12

14 Hombu Shuzo Mars Tsunuki Distillery & Hojo
Hombu Shuzo has a long history of shochu making. They also made the Mars line of whiskey. You can also take a tour of the manufacturing process. The bar and shop Hojo, which is the former Hombu family residence, is located right next to the distillery.
6594 Kasada-tsuzuki, Minamisatsuma-shi 0993-55-2121 98 364 618*00

15 Sand Bath Hall Saraku
Experience a unique way of bathing – cover yourself in sands warmed by the spring water issuing forth onto the beach. Take your time and let the warmth relax both your mind and body.
5-25-18 Yunohama, Ibusuki-shi 0993-23-3900 285 228 105*84

16 Lake Ikeda-ko (Mt. Kaimon-dake)
A crater lake about 15 kilometers around. There are expansive tea fields along the lakeside, which is gaily colored by rape blossoms, cosmos, and other seasonal flowers. It may even be home to an imaginary creature called Issy!
Ikeda, Ibusuki-shi 285 217 717*28 0993-22-2111 (Ibusuki City Tourism Division)

17 Taki-an regional cuisine
Enjoy a relaxing meal in this traditional samurai residence. Features a variety of traditional Kagoshima dishes. Has an annexed thatched-roof dwelling.
6329 Kori, Chiran-cho, Minamikyushu-shi 0993-63-3186 98 473 179*87

18 Ibusuki Sta.
285 257 011*64

19 Kagoshima-Chuo Sta.
393 575 576*77

Recommended places for new experiences

A Try soba noodle making Teuchisoba-dojo Sanryokan
This popular facility lets you try soba noodle making. You'll know it by its water wheel. Soba noodle specialists will teach you their techniques. You can also eat soba noodles freshly made there.
1371-4 Kori, Chiran-cho, Minamikyushu-shi 0993-83-1555 198 474 274*34

B Experience the wonders of Ibusuki
Offers an opportunity to try a variety of outdoor sports, farming, fishing, and crafts in Ibusuki.
0993-22-2111 (Ibusuki City Tourism Division)

C Try traditional crafts
Try your hand at techniques used to create traditional Kawanabe Buddhist altars, a traditional Japanese handicraft. You can try gold lacquering, mother-of-pearl work, chasing (wind chime making), gold stamping, and other courses. (reservations required)
6140-4 Hirayama, Kawanabe-cho, Minamikyushu-shi 0993-36-0240 198 468 870*18

Using ETC cards

- Be sure to insert your ETC card into the card slot.**
The gate arm won't go up if you haven't inserted the card, or if the card has expired. There is a notification antenna that will notify you if you haven't inserted your ETC card while you're on the highway. Insert the card firmly into the ETC card slot and make sure that it's working properly before using.
- Look out for the ETC gate signal and display.**
Before getting into an ETC lane, check that the signal is not red. If the signal is red, then the gate is down and no car (with or without an ETC card) can pass through. Never get into a lane because there may be a toll gate attendant crossing the lane.
- Drive carefully and keep your speed under 20km/hr in an ETC lane.**
When entering an ETC lane, slow down to 20km/hr or less and proceed slowly until the gate arm lifts. Be sure to keep a safe distance between you and the car in front of you.
- Use a general lane to exit the highway if there was an error using your card when you entered the highway.**
If the ETC card device shows an error once you have passed through an ETC lane at the toll booths when you entered the highway, use a general lane (with a toll booth attendant) instead of an ETC lane when you exit the highway.
- Stay calm if the gate arm does not lift when you exit the highway.**
Never reverse your car if the gate arm does not lift, as you may hit the car behind you. In such a case, use the intercom in the lane to call an attendant and follow the instructions provided. Never get out of the car and walk on the highway, as this is extremely dangerous.

Major traffic signs

Max. speed 50, Stop, Traffic prohibited, No entry, Closed to vehicular traffic, No U-turn, Proceed slowly, No parking, Proceed only in the direction indicated, One way, Pedestrians only, No parking except when indicated

Using map codes

Map codes are latitudes/longitudes turned into numerical codes that are used all over Japan. You can look up map codes using the Drive! NIPPON map code smartphone app, and use them when setting the destination on your vehicle's navigation system (Only for devices that can use map codes). Searching and using map codes is entirely free.

MAPCODE
Drive! NIPPON smartphone app
Download on the App Store
GET IT ON Google play

1 Set your destination.
2 Select "Map code".
3 Enter the map code.
4 All set!

170 033 012*60

Contact information of car rental companies

Near Kagoshima-Chuo Sta.	Near Kagoshima Airport
Toyota Rent-A-Leasing.....Tel. 099-250-0100 (Kagoshima-Chuo Station)	Toyota Rent-A-Car.....Tel. 0995-58-2306 (Kagoshima Airport)
Nissan Rent-A-Car.....Tel. 099-258-3336 (Kagoshima-Chuo Station East Exit)	Nissan Rent-A-Car.....Tel. 0995-58-2539 (Kagoshima Airport)
Orix Rent-A-Car.....Tel. 099-256-0082 (Kagoshima-Chuo Station)	Orix Rent-A-Car.....Tel. 0995-58-4182 (Kagoshima Airport)
Nissan Rent-A-Car.....Tel. 099-250-2123 (Kagoshima-Chuo Station)	Nissan Rent-A-Car.....Tel. 0995-58-2120 (Kagoshima Airport)
Sky Rent-A-Car.....Tel. 099-214-5656 (Kagoshima-Chuo Station)	Sky Rent-A-Car.....Tel. 0995-58-9300 (Kagoshima Airport)

Touring with A Rental Car

A journey of DISCOVERY

SOUTHERN KAGOSHIMA TOUR GUIDEBOOK

Minamisatsuma, Minamikyushu, Makurazaki, Ibusuki & Minamiosumi

MINAMI KYUSHU, MINAMI OSUMI, MAKURAZAKI, IBUSUKI, MINAMI SATSUMA

Makurazaki
Mamiamsu Town Tourism Association
226 Heime-kawakita, Minamiosumi-cho, Kagoshima-ken
Tel. 0993-22-2525
http://www.mamiamsu-town.com/

Ibusuki City
Ibusuki City Tourism Association
226 Heime-kawakita, Minamiosumi-cho, Kagoshima-ken
Tel. 0993-22-2525
http://www.ibusuki.or.jp/

Makurazaki City
Makurazaki City Fisheries, Commerce, and Industry Division
200 Higashihonmachi, Makurazaki-shi, Kagoshima-ken
Tel. 0993-72-1111
http://www.city.makurazaki.lg.jp/

Minamikyushu City
Minamikyushu City Commerce, Industry, and Tourism Division
6204 Kori, Chiran-cho, Minamikyushu-shi, Kagoshima-ken
Tel. 0993-83-2511
http://www.city.minamikyushu.lg.jp/

Minamiosumi City
Minamiosumi City Tourism Association
34-2 Kasada-honcho, Minamiosumi-shi, Kagoshima-ken
Tel. 0993-52-2111
http://www.city.minamiosumi.lg.jp/

Minamisatsuma City
Minamisatsuma City Tourism Association
2448 Kasada-kawaba, Minamisatsuma-shi, Kagoshima-ken
Tel. 0993-52-2111
http://www.city.minamisatsuma.lg.jp/

Minamiosumi Town
Minamiosumi Town Tourism Division
226 Heime-kawakita, Minamiosumi-cho, Kagoshima-ken
Tel. 0993-22-2525
http://www.ibusuki.or.jp/

Mimamiosumi Town
Mimamiosumi Town Tourism Association
226 Heime-kawakita, Minamiosumi-cho, Kagoshima-ken
Tel. 0993-22-2525
http://www.mimamiosumi-town.com/

MINAMIOSUMI IBUSUKI

●● Two-day, one-night tour course ●●

Minamiosumi is a land full of nature and mystery. Ibusuki is a resort town filled with hot springs and the kind of resort atmosphere you find in the southern latitudes. There's plenty to see at the tips of the two peninsulas. A ferry services both tips, so you can travel around them in one go.

DAY 1
START! Kagoshima-Chuo Sta. Yamagawa Port > Nejime Port
393 575 576*77 285 136 163*77

1 Heirtsu Torii Gates at Suwa-jinja Shrine
Two bright red torii gates stand side-by-side. Because of this, the shrine is viewed as beneficial for having a happy marriage and for finding a partner. There used to be two shrines standing side-by-side.
5076 Nejime-kawaminami, Minamiosumi-cho, Kimotsuki-gun 0994-24-2639 170 124 879*45

2 Ogawa Falls
Walk about 1.2km deep into the mountains following the stream, and you'll come across a mystical waterfall. The water falls off a 60-m-wide columnar precipice, and the clear water sparkles in the waterfall basin.
12222-2 Nejime-kawakita, Minamiosumi-cho, Kimotsuki-gun 0994-24-3115 (Minamiosumi Town Tourism Division) 170 099 549*62

3 Happa DELI
This is one of the finest cafes and restaurants in Minamiosumi that uses mostly Minamiosumi ingredients, and you can enjoy your fill of delicious Nejime amberjack and other delights.
5024 Nejime-kawaminami, Minamiosumi-cho, Kimotsuki-gun 0994-24-5700 170 154 107*22

4 Tankan Citrus Soft Serve Ice Cream
Their soft-serve ice cream with tankan citrus is also popular!
12222-2 Nejime-kawakita, Minamiosumi-cho, Kimotsuki-gun 0994-24-5300 170 152 210

5 Panorama Park Nishiharadai
An observatory atop a 439-m-high mountain. Kinkowan Bay stretches before you, and you can get a view of Sakurajima Island, Mt. Kaimon-dake, and Cape Sata-misaki in the distance.
Nejime-yokobegou, Minamiosumi-cho, Kimotsuki-gun 0994-24-3115 (Minamiosumi Town Tourism Division) 170 033 012*60

6 Minamiosumi Tourism and Exchange Hall - Nantan Market
Sells Minamiosumi farm produce, marine products, and processed foods. Located right next to Nejime Port. Stop by and pass the time as you wait for your ferry.
718-38 Nejime-kawaminami, Minamiosumi-cho, Kimotsuki-gun 0994-28-1866 170 151 329*37

7 Nejime Onsen Neppikan
A hot spring facility near Nejime Port making it convenient as a base for sightseeing in Minamiosumi. They are known for their food which uses plenty of local fresh ingredients.
732 Nejime-kawaminami, Minamiosumi-cho, Kimotsuki-gun 0994-24-5300 170 152 210

8 JR Nishi-Oyama Sta.
Japan's southernmost JR station. Fields stretch out all around the station, and Mt. Kaimon-dake rises right in front of you. There are also icons of good luck such as a bell and a yellow post box.
302 Yamagawa-kyocho, Ibusuki-shi 0993-34-0132 (Kaimon Market - Kyutaro) 0993-22-2111 (Ibusuki City Tourism Division) 285 069 373*62

9 Ibusuki City Tosenkyo Somen-nagashi
Enjoy somen noodles chilled in Tosenkyo Kyoden spring water, which was chosen as one of Japan's 100 exquisite and well-protected waters of the Heisei Period. Features unique circular tables where the noodles circulate round and round (winter menu also available).
5967 Kaimonjuchou, Ibusuki-shi 0993-32-2143 285 155 882*06

10 Mango no Mori
The garden sells mangoes, passion fruits, and dragon fruits. You can also enjoy parfaits, soft-serve ice cream, and other cold desserts.
1332-4 Yamagawa-okachiyogamizu, Ibusuki-shi 0993-35-0032 285 010 131*85

11 Hirakiki-jinja Shrine
Revered since ancient times for enshrining the god of safe navigation and protector of fishermen. It's a unique shrine built facing north so you can worship facing Mt. Kaimon-dake.
1346 Kaimonjuchou, Ibusuki-shi 0993-32-2007 285 125 452*22

12 Healthy Land Rutenburo "Tamatabako Onsen"
An outdoor bath on an overlook, with a splendid view facing the sea. The refreshing breeze while you soak leads a feeling of openness to this bath (Closed on Thursdays).
3292 Yamagawa-fukumoto, Ibusuki-shi 0993-35-3577 285 044 452*22

13 Ibusuki Sta.
285 257 011*64

14 Kagoshima-Chuo Sta.
393 575 576*77

Recommended places for new experiences

A Cape Sata-misaki Park and Satadei-go Boat
Cape Sata-misaki Park will have its grand opening in spring in the spring of 2019. You can look out underwater while on board the nearby Satadei-go Boat. You'll see colorful coral reefs stretching before you and tropical fishes swimming about.
417 Sata-magome, Minamiosumi-cho 0994-27-3151 (Cape Sata-misaki Park Tours Information Center) 486-4 Sata-magome, Minamiosumi-cho 0994-27-3355 (Satadei waiting area) 605 306 605*88

B Kuwanomi Sericulture Farmhouse Cafe
A textile studio operating out of a sericulture farmhouse. You can try making a silk coaster or a silk lotion.
532-2 Higashikata, Ibusuki-shi 0993-26-4811 (reservations required) 285 284 169*57

C Magical stay (stay in a mid-air tent)
An accommodation program where you can experience Minamiosumi's great outdoors. You'll stay in a tent stretched between trees. It will feel magical like you're floating.
Minato Park, 718-2 Nejime-kawaminami, Minamiosumi-cho, Kimotsuki-gun 0994-28-1866 170 152 367*85

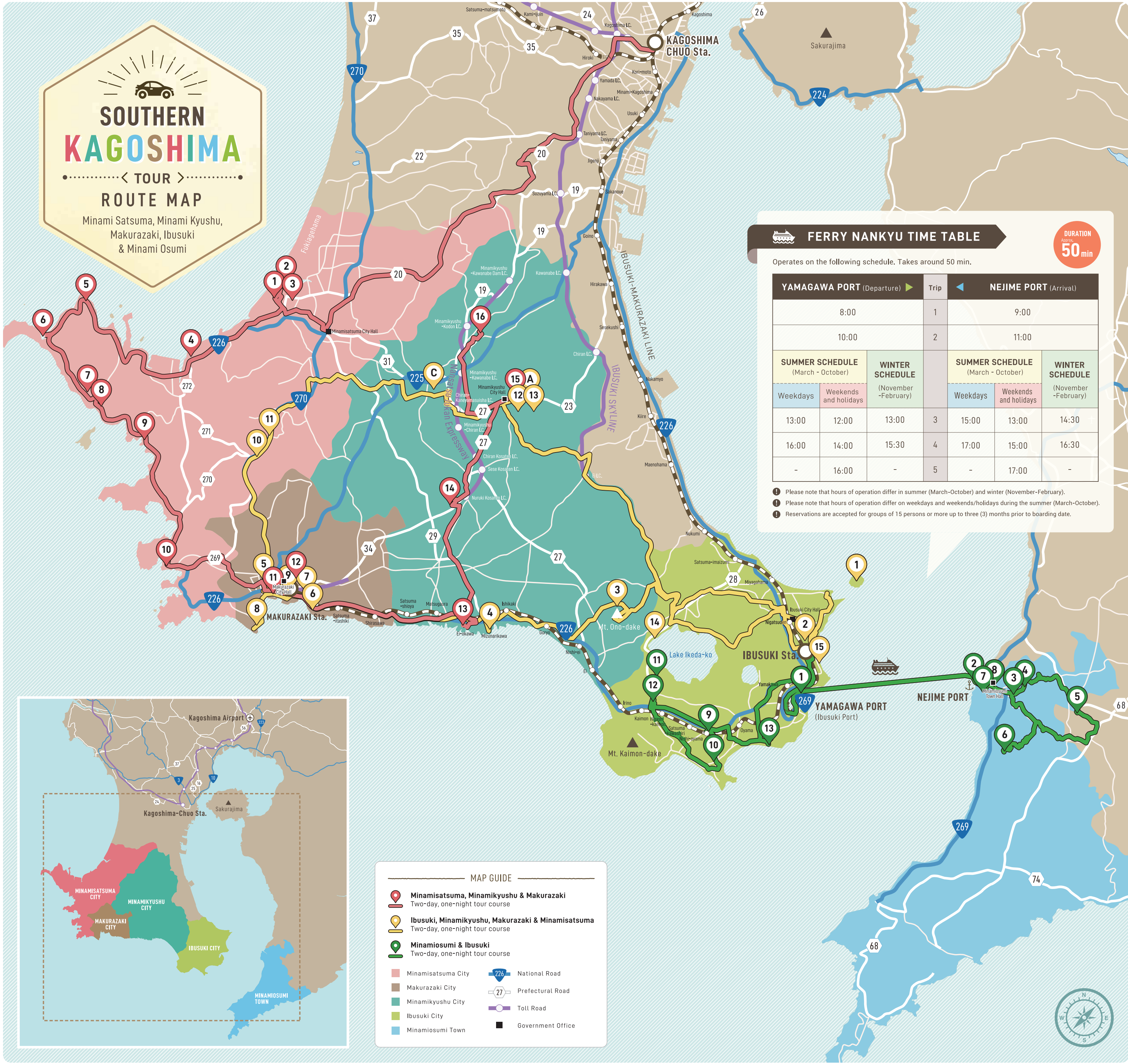
Address, Contact, Map code, Sightseeing, Shopping, Food, Onsen, Accommodation

SOUTHERN KAGOSHIMA

< TOUR >

ROUTE MAP

Minami Satsuma, Minami Kyushu, Makurazaki, Ibusuki & Minami Osumi



MAP GUIDE

- Minamisatsuma, Minami Kyushu & Makurazaki
Two-day, one-night tour course
- Ibusuki, Minami Kyushu, Makurazaki & Minamisatsuma
Two-day, one-night tour course
- Minamiosumi & Ibusuki
Two-day, one-night tour course

 Minamisatsuma City	 National Road
 Makurazaki City	 Prefectural Road
 Minami Kyushu City	 Toll Road
 Ibusuki City	 Government Office
 Minamiosumi Town	

FERRY NANKYU TIME TABLE

Operates on the following schedule. Takes around 50 min.

YAMAGAWA PORT (Departure)		Trip	NEJIME PORT (Arrival)	
8:00		1	9:00	
10:00		2	11:00	
SUMMER SCHEDULE (March - October)			SUMMER SCHEDULE (March - October)	
Weekdays	Weekends and holidays		Weekdays	Weekends and holidays
13:00	12:00	3	15:00	13:00
16:00	14:00	4	17:00	15:00
-	16:00	5	-	17:00
WINTER SCHEDULE (November - February)			WINTER SCHEDULE (November - February)	
Weekdays	Weekends and holidays		Weekdays	Weekends and holidays
13:00	13:00	3	15:00	14:30
15:30	15:30	4	17:00	16:30
-	-	5	-	-

- 1 Please note that hours of operation differ in summer (March-October) and winter (November-February).
- 2 Please note that hours of operation differ on weekdays and weekends/holidays during the summer (March-October).
- 3 Reservations are accepted for groups of 15 persons or more up to three (3) months prior to boarding date.

MINAMI SATSUMA MAKURAZAKI MINAMIKYUSHU

Two-day, one-night tour course

Experience never-ending fields of tea, the deep blue sea and the clear sky, the sun setting over the coast, and many other wonderful sights. A journey here will make you feel free.

DAY 1

START! Kagoshima-Chuo Sta. ☎ 393 575 576*77

1 Fukiagehama Kaihin Park
This expansive land measuring 110ha has a camping area and sports ground. It also rents out bicycles for its bike trail.
☎ 1936-2 Kaseda-takahashi, Minamisatsuma-shi ☎ 0993-52-0910 ☎ 198 664 169*50

2 Kaseda Bussan Center Ruginasu
Sells tangerines, melons, fresh vegetables, and other locally grown farm produce. There's also a restaurant inside where you can enjoy dishes using local ingredients.
☎ 1952-2 Kaseda-takahashi, Minamisatsuma-shi ☎ 0993-53-8739 (Kaseda Koryu Center - Sanparu) ☎ 198 665 107*38

3 Kaseda Kaihin Onsen Yuraku
Spring water loaded with minerals from 1,300m under Fukiagehama. Features saunas, bubble baths, and a lot of other baths. An outdoor bath with a garden is also available.
☎ 1952-2 Kaseda-takahashi, Minamisatsuma-shi ☎ 0993-52-0226 ☎ 198 665 075*15

4 Dura Furusato Kujira-kan & Kujira-no-Nemurooka
Sells citrus fruits and fresh vegetables. The neighboring Kujira-no-Nemurooka displays skeletal specimens of sperm whales that were washed up on nearby shores.
☎ 29423 Dura-cho, Minamisatsuma-shi ☎ 0993-62-2120 ☎ 505 253 096*76
☎ 29451 Dura-cho, Minamisatsuma-shi ☎ 0993-62-2111 (Minamisatsuma City Office)

5 Kosakiyama Observatory
The overlook commands a view of the East China Sea. You can also see Mt. Kinyo, Fukiagehama, and the Koshikijima Islands in the distance. The setting sun glimmering on the coastline is also a beautiful sight.
☎ Katsura Kasasa-cho, Minamisatsuma-shi ☎ 0993-53-2111 (Minamisatsuma City Tourism Exchange Division) ☎ 505 334 890*78

6 Kasasa Ebisu
A chic hotel at the foot of Cape Noma-misaki. You can see and experience the beautiful sea of Kasasa. You can also taste plenty of locally caught fresh fish.
☎ 14847-1 Katsura, Kasasa-cho, Minamisatsuma-shi ☎ 0993-63-0900 ☎ 0993-59-5020 ☎ 505 271 491*66

7 Tojinosato Kasasa: An Exhibition Hall for Traditional Shochu Brewing
Shochu brewing following traditional methods. You can tour and observe the brewing process. There's also an exhibition where you can learn more about shochu.
☎ 6866-1 Akogi, Kasasa-cho, Minamisatsuma-shi ☎ 0993-63-0900 ☎ 6762 Akogi, Kasasa-cho, Minamisatsuma-shi ☎ 0993-63-1002 ☎ 505 155 074*18

8 Kasasa Art Gallery
The beauty of nature as art. The beauty of Okiakimejima Island and the surrounding ocean stretch out from this art museum on an overlook. The displays periodically change.
☎ 8666-1 Akogi, Kasasa-cho, Minamisatsuma-shi ☎ 0993-63-0900 ☎ 505 125 825*87

9 Ganjin Memorial & James Bond Shooting Location Monument
This is where Ganjin, a priest from the Tang Dynasty in China, landed. You can learn about his travels and achievements here. The memorial hall features an observation area where you can look out over the coast where Ganjin washed ashore. The 1967 Bond film 'You Only Live Twice' was shot in Bonotsu. The signature of Sean Connery is also carved into the monument.
☎ 225-2 Akime, Bonotsu-cho, Minamisatsuma-shi ☎ 0993-68-0288 ☎ Akime, Bonotsu-cho, Minamisatsuma-shi ☎ 0993-53-2111 (Minamisatsuma City Tourism Exchange Division) ☎ 505 069 315*51

10 Marukizaki Observatory
There is an overlook at the tip of the cape where you can look out over the complex coastline of Bonotsu. To the west you can see the ocean and strangely shaped rocks, to the south you can see the streets of Bonotsu, and to the north you can see the beautiful beaches.
☎ Tomari, Bonotsu-cho, Minamisatsuma-shi ☎ 0993-53-2111 (Minamisatsuma City Tourism Exchange Division) ☎ 761 401 580*85

11 Kamafuta-jinja Shrine
Put the pot cover on your head and walk all the way from the torii gates to the main shrine. If you can get there and pray without the pot cover falling off, then your prayer will be answered. Enshrines the god of war. Olympic athletes and others who desire victory come here to pray.
☎ 4827 Biyogu, Ei-cho, Minami Kyushu-shi ☎ 0993-38-2127 (Kamafuta Shrine Operation and Management Committee) ☎ 648 875 486*68 ☎ 198 066 214*20

12 Ajidokoro Ichitoku
Offers everything delicious in Makurazaki. Offers a rich variety of bento dishes to choose from, and plenty of other seafood dishes, too. You'll also find many meat dishes using "Kagobuta Pork" and "Makurazaki Beef."
☎ 81 Higashihonmachi, Makurazaki-shi ☎ 0993-72-3347 ☎ 198 066 214*20

13 Makurazaki Osakana Center
A tourism hub facility in Makurazaki Port. Inside you'll find fresh seafood, dried bonito, and other processed foods on sale. On the second floor is an observatory restaurant where you can enjoy the local dishes of Makurazaki.
☎ 33-1 Matsuno-cho, Makurazaki-shi ☎ 0993-73-2311 ☎ 198 034 867*00

14 Cha-bakken-oka (Takatsuka Hill)
Minami Kyushu is known for Chiran tea, and is the leading tea-producing region in Japan. Vast tea fields stretch out over the hills, and in the distance you can see Mt. Kaimon-dake and the ocean. The view from the hill is spectacular!
☎ 13746-4 Kori, Chiran-cho, Minami Kyushu-shi ☎ 0993-83-3943 ☎ 198 473 238*81

15 Satsuma-Eikokukan Tea World
An exhibition of the 150-year history between Satsuma and Great Britain. You can also experience British tea culture. Enjoy some delicious tea and snacks.
☎ 13746-4 Kori, Chiran-cho, Minami Kyushu-shi ☎ 0993-83-3943 ☎ 198 473 238*81

16 Kiyomizu Iwaya Park / Kiyomizu Magaibutsu
A park built around the source of local spring water. It also has a camp area and lodges. The look of the park changes depending on the season, from cherry blossoms in the spring to colorful leaves in the fall.
☎ 3882 Kiyomizu, Kawanabe-cho, Minami Kyushu-shi ☎ 0993-56-5465 ☎ 33-1 Matsuno-cho, Makurazaki-shi ☎ 0993-73-2311 ☎ 198 591 606*47

DAY 2

START! Kagoshima-Chuo Sta. ☎ 393 575 576*77

1 Kasasa Ebisu Sunset Cruise
Climb aboard a fishing boat and take an evening cruise around the cape. The sight of the coastline glimmering from the sun setting over the East China Sea is not to be missed.
☎ 14847-1 Katsura, Kasasa-cho, Minamisatsuma-shi ☎ 0993-59-5020 ☎ 505 271 491*66

2 Satsuma Ride (Guided bike tour)
Enjoy the breeze as you ride! A bike trail along Fukiagehama is accessible. Bikes are also available for rent.
☎ Kaseda-takahashi, Minamisatsuma-shi ☎ 0993-52-0910 (Fukiagehama Kaihin Park) ☎ 0993-53-8739 (Bin-in) ☎ 198 664 169*50

3 Makurazaki Osakana Center
Experience eating dishes seared on a straw grill "Katsuo tatakai" is served after searing the surface of the unskinned bonito. You can enjoy searing it yourself. It smells savory and tastes great! (Reservations required)
☎ 33-1 Matsuno-cho, Makurazaki-shi ☎ 0993-73-2311 ☎ 198 034 867*22

Recommended places for new experiences